

# TEN-4-FACESp

Bruising Clinical Decision Rule for Children < 4 Years of Age

## When is bruising concerning for abuse in children < 4 years of age?

If bruising in any of the three components (Regions, Infants, Patterns) is present without a reasonable explanation, strongly consider evaluating for child abuse and/or consulting with an expert in child abuse.

### TEN

Torso | Ears | Neck



### FACES

Frenulum  
Angle of Jaw  
Cheeks (*fleshy part*)  
Eyelids  
Subconjunctivae

REGIONS

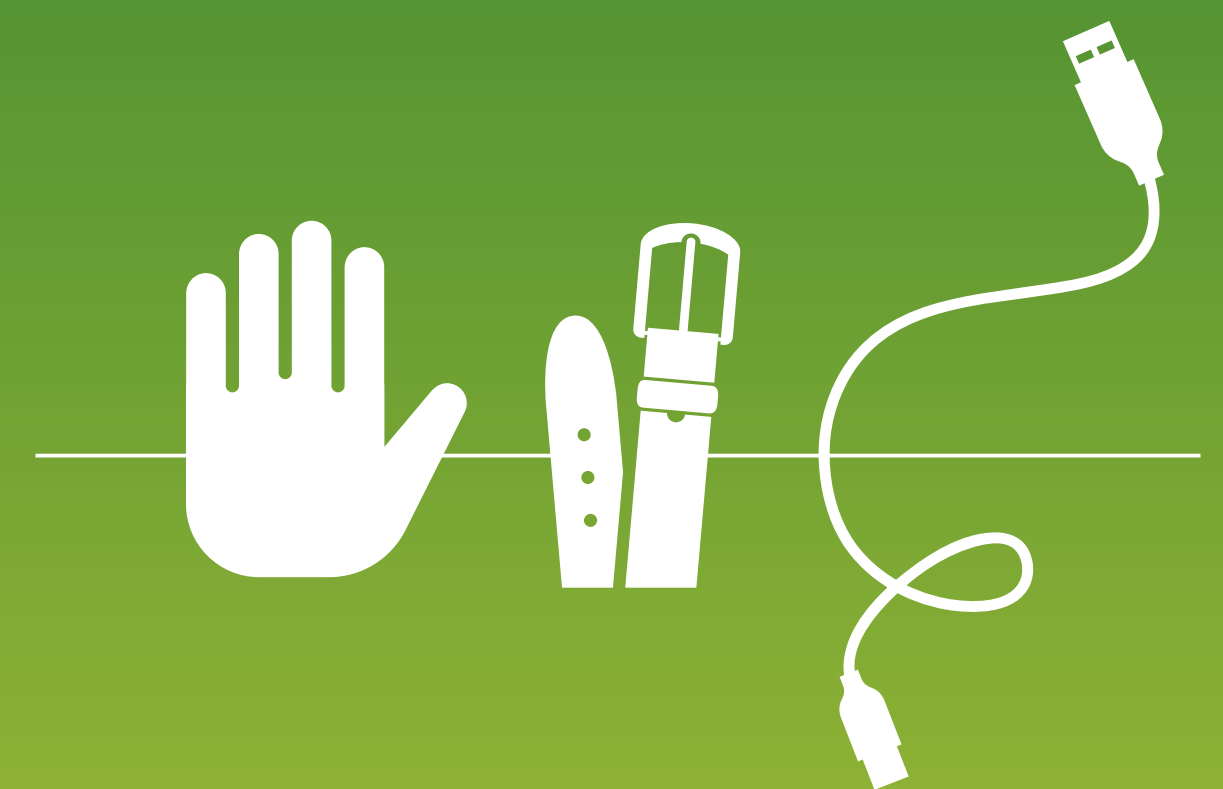
4 months  
and younger



Any bruise, anywhere

INFANTS

Patterned  
bruising



Bruises in specific  
patterns like slap, grab  
or loop marks

PATTERNS

## See the signs

Unexplained bruises in these areas most often result from physical assault.

TEN-4-FACESp is not to diagnose abuse but to function as a screening tool to improve the recognition of potentially abused children with bruising who require further evaluation.

 Ann & Robert H. Lurie  
Children's Hospital of Chicago®

TEN-4-FACESp was developed and validated by Dr. Mary Clyde Pierce and colleagues.  
It is published and available for FREE download at [luriechildrens.org/ten-4-facesp](http://luriechildrens.org/ten-4-facesp).

© Ann & Robert H. Lurie Children's Hospital of Chicago

